



# Turner Locker

Commercial Property Consultants

Southernhay Lodge  
Barnfield Crescent  
Southernhay East  
Exeter  
EX1 1QT

tel: 01392 201 202  
fax: 01392 20 20 44

email: [mark@turner-locker.co.uk](mailto:mark@turner-locker.co.uk)  
web: [www.turner-locker.co.uk](http://www.turner-locker.co.uk)

## **23 SOUTHERNHAY EAST EXETER EX1 1QL**



### **TO LET office suite**

**FLEXIBLE TERMS WITH PARKING NEARBY AVAILABLE**

**APPROX: 52.75 sqm (568 sq. ft.)**

## LOCATION

Number 23 Southernhay East is a period building in Exeter's central business district where many Georgian period buildings overlook the communal greens. The area is occupied principally by professional and service sector business, it is close to the Princesshay shopping centre and High Street retail locations. The bus station at Paris St, and Central train station in Queen Street are just a short walk away.



## DESCRIPTION

The suite is on the 3rd floor of the building with excellent views and good natural light. There is gas central heating and shared use of kitchen and toilet facilities.

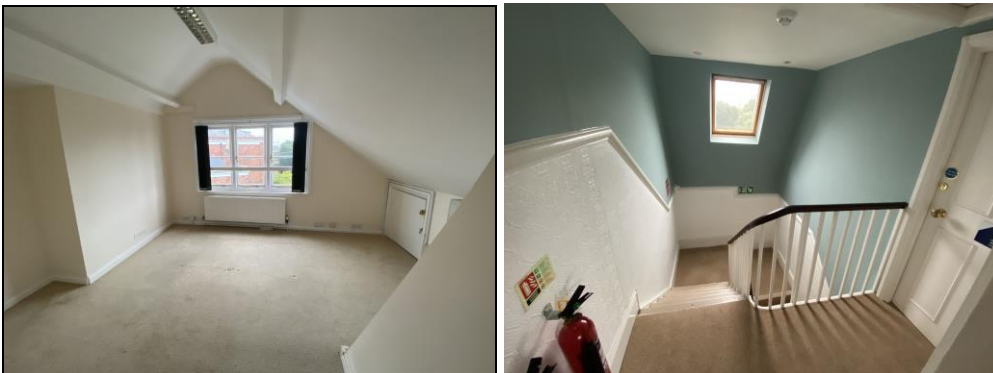
**Main office:** L shaped 8.3m x 2.70m (to sill height) + 2.68m x 3.79m

**Door to**

**Office:** 4.00m (max) x 3.31m

**Separate Private office:** off main stairs 3.1m x 2.24m

**Total 52.75 sq. m**



**TERMS;** A new lease - rent £575 PCM.

There is an additional cost for the service charge, energy costs and insurance.

**RATEABLE VALUE:** £3,600 (100% small business rate relief may be applicable)

Viewing by appointment with **Turner Locker** as letting and managing agents for the building.

**Turner Locker**  
Tel: **01392 201 202**

Email: [mark@turner-locker.co.uk](mailto:mark@turner-locker.co.uk)

Website: [www.turner-locker.co.uk](http://www.turner-locker.co.uk)

**SUBJECT TO CONTRACT - EXCLUSIVE OF VAT WHERE APPLICABLE**

*Misrepresentation Act*

The particulars in this brochure have been produced in good faith and are designed as a general guide and do not constitute a whole or any part of a contract. All liability, negligence, or otherwise arising from the use of these particulars is hereby excluded. Rents and prices quoted maybe subject to VAT in addition. Prospective purchasers and tenants must decide for themselves as to the accuracy of the information provided.