



# Turner Locker

Commercial Property Consultants

Southernhay Lodge  
Barnfield Crescent  
Southernhay East  
Exeter  
EX1 1QT

tel: 01392 201 202

fax: 01392 20 20 44

email: [mark@turner-locker.co.uk](mailto:mark@turner-locker.co.uk)

web: [www.turner-locker.co.uk](http://www.turner-locker.co.uk)

## **5 BARNFIELD CRESCENT SOUTHERNHAY EXETER EX1 1QT**



### **Single Office to Let**

15.4 sq m / 165 sq ft

On inclusive flexible terms - Parking Available

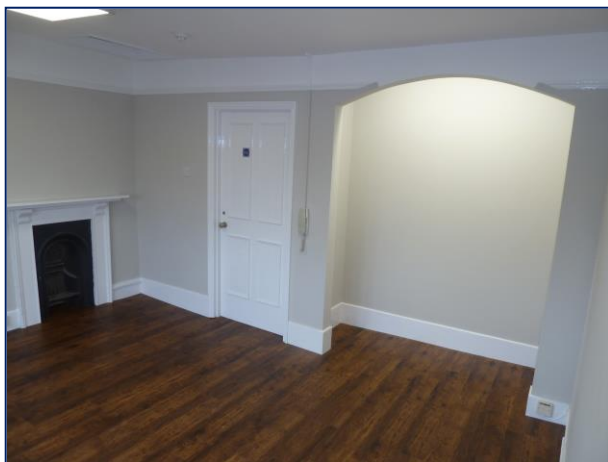
## LOCATION

Barnfield Crescent is a prestigious private crescent running off Southernhay East, Exeter's prime central business district. Situated a few minutes' walk from the city's High Street and Princesshay Shopping Centre. Also within easy walking distance are the Central main line railway station and the bus and coach stations. Despite its central location and accessibility Barnfield Crescent retains a rare degree of tranquility and 'exclusivity'.



## ACCOMMODATION & PROPOSAL

The office is on the third floor of this period building. Access is from the main entrance and staircase of 5 Barnfield Crescent. There is a toilet on this floor, and kitchen, but additionally there are men's and ladies toilets and another communal kitchenette on the lower ground floor.





Office T4 is offered with the certainty of an all-inclusive fixed rental and service charge. This rent cost includes, energy costs, water rates, buildings insurance and the servicing of the communal areas.

Tenants are only responsible for their own telecom/internet costs, the cleaning, maintaining and internal decorative order of their offices and business rates (although these should be subject to 100% small business rate relief).

<b><i>Office</i></b>	<b><i>Size-SQM</i></b>	<b><i>Monthly Inclusive Cost</i></b>
<b>T4</b>	<b>4.1m x 3.38m (plus recess 2m x 0.76m)</b>	<b>£499 pcm</b>

#### **CAR PARKING**

Car parking spaces may be available on a separate license agreement.

#### **BUSINESS RATES – Approximate for 2021**

Rateable Value:       £1350

Rates Payable:       approx. £684pa (but **should be eligible for 100% Small Business Rates relief (SBRR)**, please contact Exeter City Council on 01392 277888 or visit their website for more information).



## **VIEWING**

By appointment only with

**Turner Locker Barnfield Ltd  
Southernhay Lodge  
Barnfield Crescent  
Exeter EX1 1QT**

**Telephone: 01392 201 202**

**Website: <http://www.turner-locker.co.uk/>**

**Email: [mark@turner-locker.co.uk](mailto:mark@turner-locker.co.uk)**

### **SUBJECT TO CONTRACT - EXCLUSIVE OF VAT WHERE POSSIBLE**

Please note that Mark Turner of Turner Locker has an interest in these premises. The particulars in this brochure have been produced in good faith and are designed as a general guide and do not constitute a whole or any part of a contract. All liability, negligence or otherwise arising from the use of these particulars is hereby excluded. Rents and prices quoted maybe subject to VAT in addition. Prospective purchasers and tenants must decide for themselves as to the accuracy of the information provided.