



Turner Locker

Commercial Property Consultants

Southernhay Lodge
Barnfield Crescent
Southernhay East
Exeter
EX1 1QT

tel: 01392 201 202

fax: 01392 20 20 44

email: mark@turner-locker.co.uk

web: www.turner-locker.co.uk

Kings Wharf The Quay **EXETER**

EX2 4AN



2nd FLOOR SOUTH

OFFICE SUITE TO LET

217.7M² (2,344 SQFT)



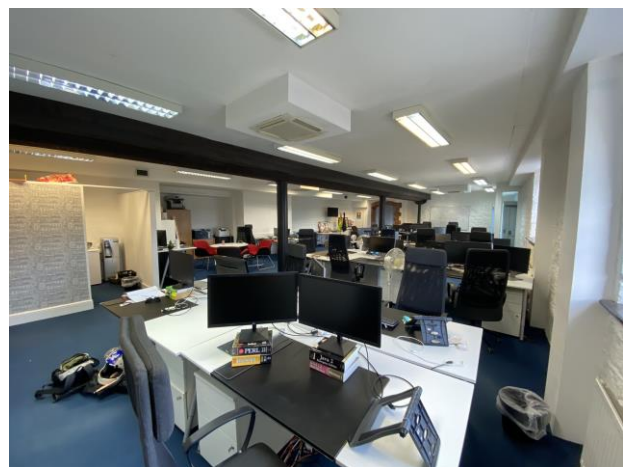
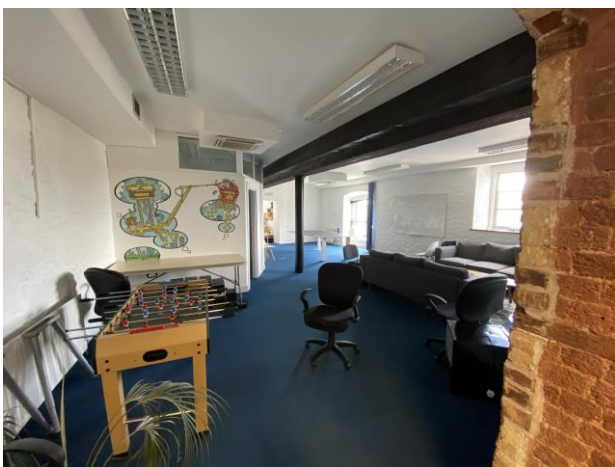
DESCRIPTION & LOCATION

This Suite is situated on the Quay overlooking the River Exe, with an unrivalled aspect, it is a unique location within easy walk of all City Centre facilities. Kings Wharf was formed by the conversion of two quayside woollen warehouses dating back to the early 19th Century, linked by a glazed atrium with lift to all floors. Whilst the period appeal has been retained, the buildings now provide modern open plan office accommodation with video surveillance and video entry system, and car park.

This Suite is located on the 2nd floor of the South Warehouse with access from both the Quay level, at the front, and to car park (Level 4) at the rear of the building, accessed via Colleton Crescent. These offices have considerable character with natural stone walls and vertical cast iron columns but with a contemporary feel. The former loading doors are retained and windows overlook the river.

In built features include; central heating, air conditioning, Cat2 compliant lighting, recessed floor sockets, & a well-appointed staff kitchenette

Men's & ladies toilets and newly refurbished shower facilities are off the building's atrium.





TERMS

Available with new short-term, Sub-lease, with rolling annual break option in favour of the head leaseholder. There is a service charge for the running and maintenance of the building.

Rental: £30,472 per annum, exclusive + VAT.

Car spaces may be available, £1,990 per annum + VAT.on annual licence.

RATES

Rateable Value: £21,750 (taken from the Government website)



ANNUAL SERVICE CHARGE

Includes communal heating system and services, lighting of communal areas, cleaning and maintenance of toilet facilities, security, maintenance of building exterior, and buildings insurance. Details on request.

Viewing by appointment with **Turner Locker Barnfield** as letting and managing agents for the building.

Tel: **01392 201 202**

Website: www.turner-locker.co.uk

SUBJECT TO CONTRACT - EXCLUSIVE OF VAT WHERE APPLICABLE

Misrepresentation Act

The particulars in this brochure have been produced in good faith and are designed as a general guide and do not constitute a whole or any part of a contract. All liability, negligence, or otherwise arising from the use of these particulars is hereby excluded. Rents and prices quoted maybe subject to VAT in addition. Prospective purchasers and tenants must decide for themselves as to the accuracy of the information provided.