



Turner Locker
Commercial Property Consultants

EXETER



The Station Masters House New North Road EX4 4HE



INDIVIDUAL FIRST FLOOR OFFICES

TO LET

LOCATION AND DESCRIPTION

The property is situated just off Exeter's city centre close to junction of New North Road with Queen Street (at the Clock Tower). It is only a few minutes walk from the High St and Central Station & close to both the Exeter College and Exeter University campuses.

ACCOMMODATION – On First Floor – approx measurements.

Office 9

20.67 square meters (222 square feet). £370 pcm.



Office 10

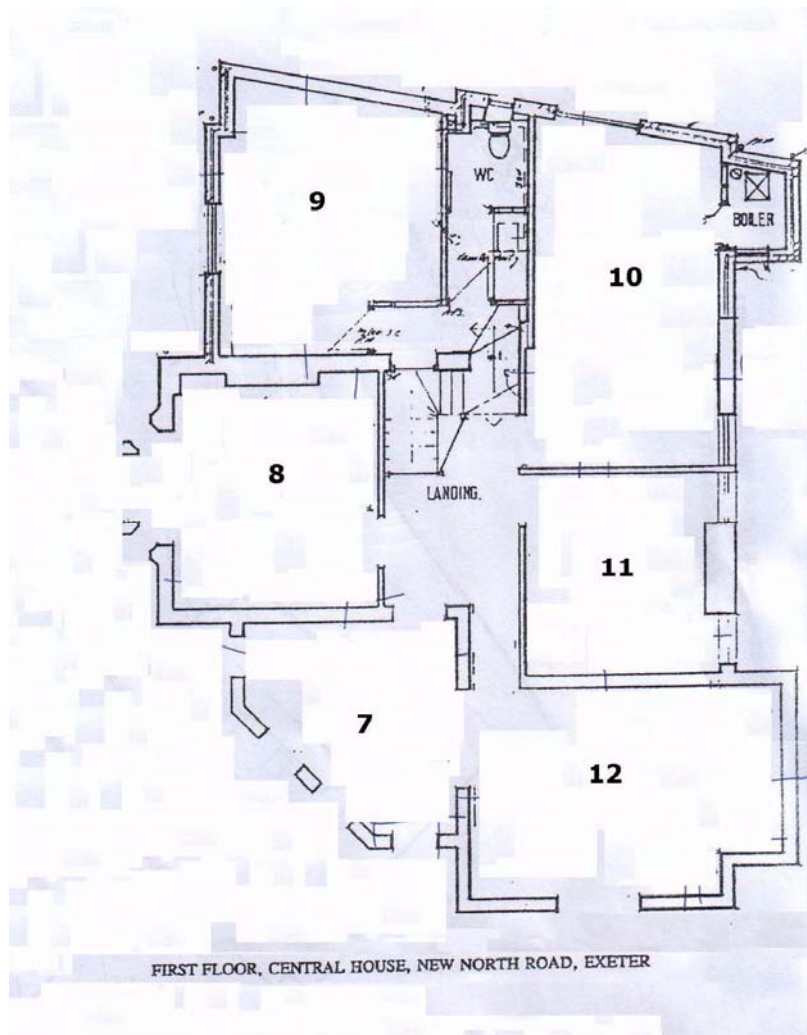
21.78 square meters (234 square feet). £390 pcm



Offices 7&12

25.73 square meters (277 square feet) £460 pcm.





The offices are offered on an inclusive licence basis and priced –per calendar month. Payment to include business rates, insurance, service charge, cleaning of common parts and heating. Individual tenants will be responsible for maintaining the interior of their room, and their own telecom costs. Parking space is available on separate licence at £500 per annum.

VIEWING; Please Contact Turner Locker

Tel: 01392 201 202 www.turner-locker.co.uk

SUBJECT TO CONTRACT EXCLUSIVE OF VAT WHERE APPLICABLE

Misrepresentation Act

The particulars in this brochure have been produced in good faith and are designed as a general guide and do not constitute a whole or any part of a contract. All liability, negligence, or otherwise arising from the use of these particulars is hereby excluded. Rents and prices quoted maybe subject to VAT in addition. Prospective purchasers and tenants must decide for themselves as to the accuracy of the information provided.